

37 Clarke Street, Market Harborough, LE16 9AD



£3,000 Per Month

Nestled on the charming Clarke Street in Market Harborough, this impressive house offers a perfect blend of space and comfort, ideal for families or those seeking a generous living environment. With five double bedrooms, this property ensures ample room for everyone, making it a delightful home for both relaxation and entertaining.

The house boasts three well-appointed reception rooms, providing versatile spaces that can be tailored to your needs, whether for formal gatherings or casual family time. The highlight of the home is undoubtedly the gigantic kitchen/diner/breakfast area, which is perfect for culinary enthusiasts and social gatherings alike. This expansive area is designed to be the heart of the home, allowing for seamless interaction with family and friends.

Adding to the appeal is a large set of bi-fold doors, from which you can step outside to discover a beautiful garden complete with a decked area, perfect for enjoying sunny days or hosting outdoor events. This outdoor space provides a tranquil retreat, ideal for relaxation or entertaining guests.

This property will soon be available for a 12-month rental.

Service without compromise

Front Elevation



Hallway



This bright and welcoming entrance hallway makes a striking first impression with its classic black and white chequered floor tiles and dramatic two-tone walls. The lower section features smart grey panelling, contrasting beautifully with crisp white walls above, creating a modern yet timeless feel.

A generously proportioned staircase with a white balustrade, warm wooden handrail, and high-quality beige herringbone carpet with smart striped edging rises to the first floor. Natural light floods in from the rear, enhancing the spacious feel and offering views through to the rear of the property.

Lounge



This bright and characterful living room is a standout space, perfect for relaxing and entertaining. The room features beautiful original wooden floorboards, a striking exposed brick chimney breast with a contemporary wood-burning stove, and a large statement mirror that enhances the sense of space and light.

Custom-built sage green shelving units flank the fireplace, providing generous display and storage space – currently styled with books, artwork and personal touches. A large bay window with plantation shutters and soft curtains floods the room with natural light and offers a lovely outlook.

Study



This bright and versatile study is a fantastic bonus room, ideal for working from home, creative pursuits or as a quiet reading space.

The room features a generous bay window that floods the space with natural light, complemented by smart blue curtains and plantation shutters. Built-in floor-to-ceiling white bookcases line two walls, offering an abundance of storage and display space for books, files, and personal items

Kitchen/Diner



This impressive open-plan kitchen diner is a truly standout space, measuring almost 10m x 10m – perfect for family life and entertaining.

The room is flooded with natural light thanks to multiple roof skylights and a wide bank of sliding doors that open directly onto the garden, creating a wonderful indoor-outdoor feel. Beautiful light herringbone wood flooring runs throughout, adding warmth and flow.

Boot Room

This practical and well-designed boot room is a highly functional addition to the home.

The space features durable light-coloured tiled flooring and smart white subway tiling, making it easy to maintain. It includes a small built-in bathtub with shower, ideal for rinsing off after gardening, walks, or sports.

There is ample storage with a deep wooden bench, overhead shelving, and a tall dark green panelled unit — perfect for coats, shoes, boots, and outdoor gear. A useful white external door provides direct access.

This room also benefits from underfloor heating throughout.

Utility



Bedroom 5



This bright and generous En-suite double bedroom offers excellent proportions and a calm, airy feel, making it a versatile and comfortable space. This room also benefits from underfloor heating throughout.

The room features crisp white walls, plenty of natural light from a large window, and quality flooring. It easily accommodates a king or double bed with room for additional furniture such as bedside tables, a chest of drawers or a chair.

Bedroom 5 En-suite



This stylish en-suite bathroom offers a fresh and contemporary feel with a lovely soft colour palette. The room features pretty pink vertical tiles, crisp white sanitaryware, and elegant brushed brass/gold fixtures throughout.

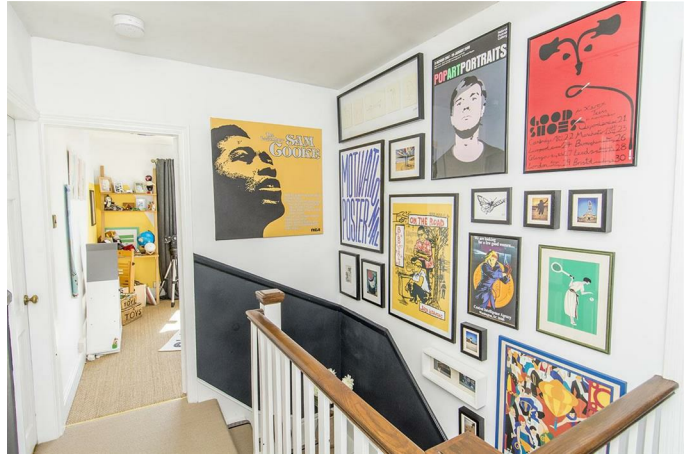
WC



This compact yet characterful downstairs cloakroom makes a bold design statement.

The space features dramatic dark panelling on the lower walls, complemented by eye-catching leopard and botanical wallpaper above. Terracotta-style floor tiles and brushed brass fixtures add warmth and personality, while the white sanitaryware keeps it practical and fresh.

Stairs/Landing



The first-floor landing is bright, spacious and makes a strong visual impact with its impressive gallery wall of framed artwork and posters.

Key features include:

- Two-tone walls with smart grey panelling below and crisp white above
- Generous space with natural light
- Attractive wooden handrail and white balustrade overlooking the staircase
- Excellent access to all first-floor bedrooms and the family bathroom

Bedroom 1



This is a beautiful and spacious principal bedroom full of character and charm, accompanied with its on-en-suite bathroom.

The room boasts elegant light pink walls paired with a striking dark grey ceiling, creating a stylish and dramatic look. A large bay window with plantation shutters and curtains provides excellent natural light and a lovely outlook.

Bedroom 1 - Ensuite



This private en-suite bathroom is fully tiled in crisp white, creating a clean and bright finish.

It includes:

A spacious shower cubicle with glass screen and thermostatic shower

Wall-mounted ceramic hand basin with mixer tap

Standard WC

Large mirror above the sink for practicality

Useful window for natural ventilation

Bedroom 2



This bright and calming double bedroom is a peaceful

retreat with a lovely fresh feel. The room features soft sage green walls, wooden flooring and a large window with plantation shutters that fills the space with natural light. A striking woven rattan pendant light adds warmth and texture to the room.

The bedroom comfortably fits a double bed with space for bedside furniture and additional pieces.

Bedroom 3



This bright and cheerful double bedroom is packed with personality and practical space.

The room benefits from excellent natural light thanks to a large window. It features a fun two-tone colour scheme with a vibrant yellow accent wall and neutral tones throughout.

Bedroom 4



This cosy and characterful bedroom is tucked into the

eaves, offering a lovely snug space ideal for a child or teenager.

The room features a practical sloping ceiling with good head height in the centre, along with a large window that provides natural light and views.

Family Bathroom



This bright and contemporary family bathroom is finished to a high standard with a clean, fresh aesthetic. It features a generous walk-in shower enclosure with a curved glass screen, chrome fixtures and a large rainfall-style shower head. There is a white wall-mounted WC and a modern rectangular wall-mounted basin with chrome mixer tap, complemented by a large mirror cabinet for storage. A chrome heated towel rail adds convenience, while patterned floor tiles bring character to the space. A useful window with blinds provides natural light and ventilation.

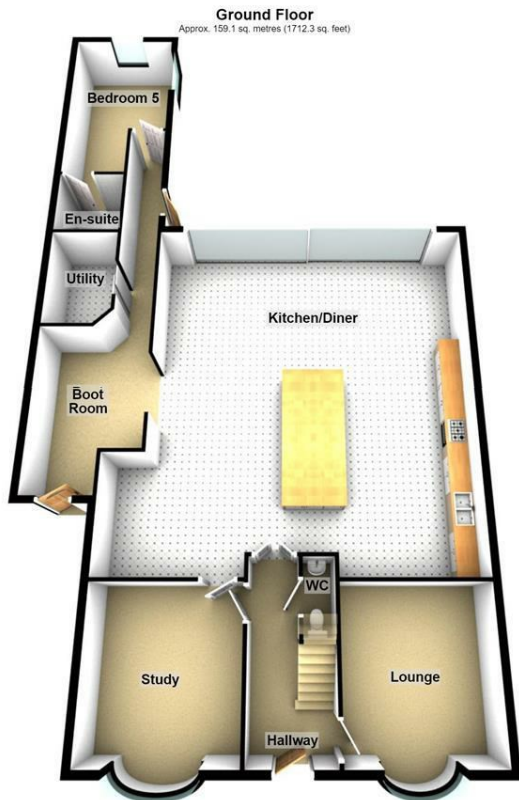
Rear Garden



Additional Information

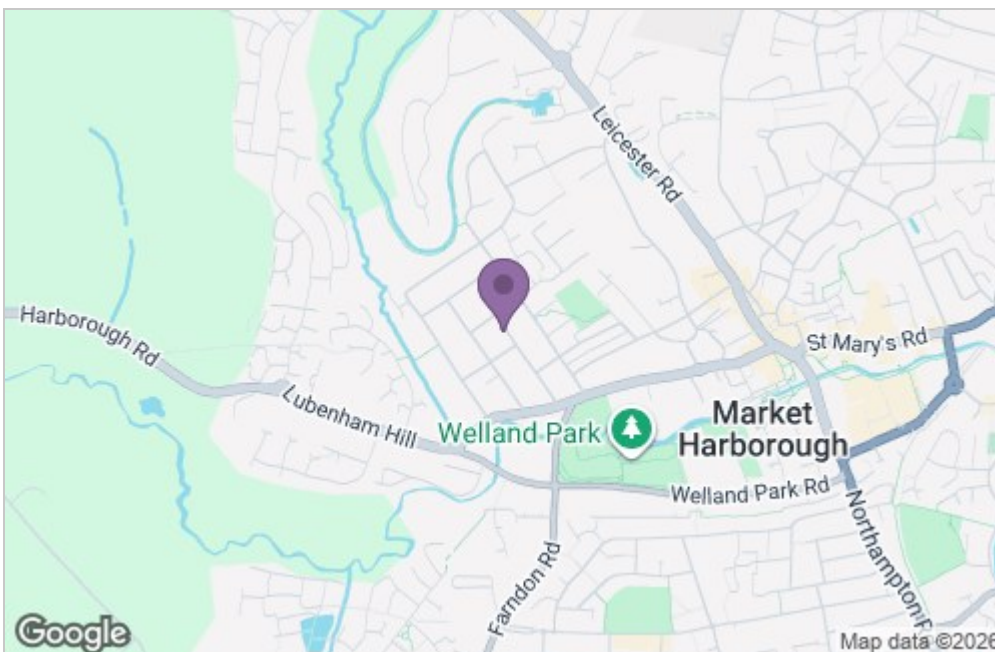
Council Tax Band - E
Holding Deposit - £692.00
Deposit - £3,461.00

Floor Plan



Total area: approx. 225.7 sq. metres (2429.6 sq. feet)

Area Map



Energy Efficiency Graph

Energy Efficiency Rating		
	Current	Potential
Very energy efficient - lower running costs		
(92 plus) A		
(81-91) B		
(69-80) C		
(55-68) D		
(39-54) E		
(21-38) F		
(1-20) G		
Not energy efficient - higher running costs		
EU Directive 2002/91/EC		
England & Wales		
Environmental Impact (CO ₂) Rating		
	Current	Potential
Very environmentally friendly - lower CO ₂ emissions		
(92 plus) A		
(81-91) B		
(69-80) C		
(55-68) D		
(39-54) E		
(21-38) F		
(1-20) G		
Not environmentally friendly - higher CO ₂ emissions		
EU Directive 2002/91/EC		
England & Wales		

Service without compromise